



Upcoming Meeting

Dates:

- ◆ **Select Board:**
- ◆ 1-16 at 6:30pm
- ◆ 2-20 at 7:00pm
- ◆ 3-20 at 7:00pm
- ◆ **School Board:**
- ◆ 1-23 at 6:00pm
- ◆ 2-27 at 6:00pm
- ◆ **Planning:**
- ◆ 1-9 at 7:00pm
- ◆ 2-6 at 7:00pm
- ◆ 3-13 at 7:00pm

Did you know?

On December 11th the Dorset Fire District No. 1 submitted a source application permit for a new water source. It's expected to take 8-12 months to get through the testing and permitting phase. The goal is that upon connection to the system the new source will allow the first new hookups to the water system in 34 years. This will allow homes and businesses to meet their needs for water.

Around Town.....



Christmas presents #3!
The Deputies loaded a car and drove to Dorset and delivered a car full of wrapped presents to the Dorset School for 17, to be surprised, students.



Here comes Santa Claus?

Each December members of the Bennington Country Sheriff's Department purchase, wrap, and hand deliver presents to families in need throughout Bennington County.

During the year the officers personally set aside funds to help purchase presents for those less fortunate.

Sgt. Jesse Bravata helped to raise some funds from generous Dorset businesses and purchase gifts for 17 students in Dorset.

As many people know, Jesse has fit in very well in Dorset as our full time law enforcement officer.

Many thanks to Jesse and his colleagues for their hard work and dedication to the residents of Dorset and greater Bennington County.

Special Thanks to: Barrows House, Rising Sun, Mettowee Mill Nursery, Dorset Union Store/ Cindy Loudenslager, 3 Pears Gallery, JK Adams, Dorset Field Club, & Tyler Electric.
Happy Holidays!

DORSET TRACTORS!



Thanks to the efforts of Malcolm Cooper and Billy Brownlee the Dorset Tractor Parade has become a local favorite and a must do item for welcoming in the Holiday Season.

This year over two dozen tractors were entered with easily 200+ people in attendance. Thanks to all who participated!

The parade route runs from HN Williams Store to the Dorset Green with a couple laps around the Green before heading back to HN Williams.

Town wide Reappraisal 2017 - 2019

On November 28, 2017 the Dorset Selectboard approved to begin steps to start a town wide reappraisal of all real property within the Town of Dorset.

Generally Dorset's Grand List is very solid. In the years that followed the 2008 financial crisis the Dorset Grand List declined slightly. Over these years there have been developments of inequities between many properties in Town. The Dorset Assessors Office works diligently to assure assessments are as equitable and accurate as possible.

FACTS:

CLA: 108%

COD: 18.12%

Equalized Grand List 2018:

Last Statistical Reappraisal: 2006

Last Town wide Reappraisal: 2003

2006-2017	Education Equalized Value	% Change	CLA
2006	\$669,687,611	0.00%	105.6
2007	\$722,342,055	7.68%	98.98
2008	\$759,750,195	5.18%	95.52
2009	\$765,831,350	0.80%	95.16
2010	\$718,324,319	-6.20%	101.32
2011	\$671,881,913	-6.40%	108.22
2012	\$659,263,558	-1.88%	109.73
2013	\$674,451,706	2.30%	106.91
2014	\$680,229,852	0.86%	105.64
2015	\$663,489,000	-2.46%	107.50
2016	\$665,605,197	0.30%	105.94
2017	\$651,285,470	-2.2%	108.00

The Common Level of Appraisal (CLA) is a statistic that measures the general status of the valuations of property in a grand list. In Dorset the CLA was recently around 108%, meaning that on average Dorset properties are valued 5% higher than 100% or market value. A CLA in the 95% to 110% range is considered good. The CLA is also used in the calculation of education tax payments.

Equity between the valuation of property is tracked by the State of Vermont in a % statistic called the Coefficient of Dispersion (COD). The COD tells us the equity of the valuations of sections of property in Town. Generally a COD below 10% is considered good, and as the number approaches 20% it can trigger a mandatory reappraisal order from the State of Vermont.

For example, the COD figure can rise, if properties valued at or below \$400,000 are consistently selling for less than the grand list value and conversely properties above \$750,000 are consistently selling for more than the grand list value. In this sequence a case can be made that generally properties under valued at \$400,000 or less may be over valued while properties valued at \$750,000 or more may be under valued. This is just an example as the valuation threshold could encompass any home value. It should also not be assumed that all properties within these sections are subject to inequity issues with valuations.

Again, this statistic is used to measure the disparity in equity of the Grand List based on recent valid sales data. Currently the COD in Dorset is 18.12%, this indicates that there is an equity issue within our Grand List.

Generally municipalities in Vermont reappraise and update property record cards every 8-10 years. Dorset has gone 14 years from the last full reappraisal. Since 2003, valuation software has changed and the new reappraisal will allow the Town to update the software used in an effort to produce the best storage and presentation of our Grand List data.

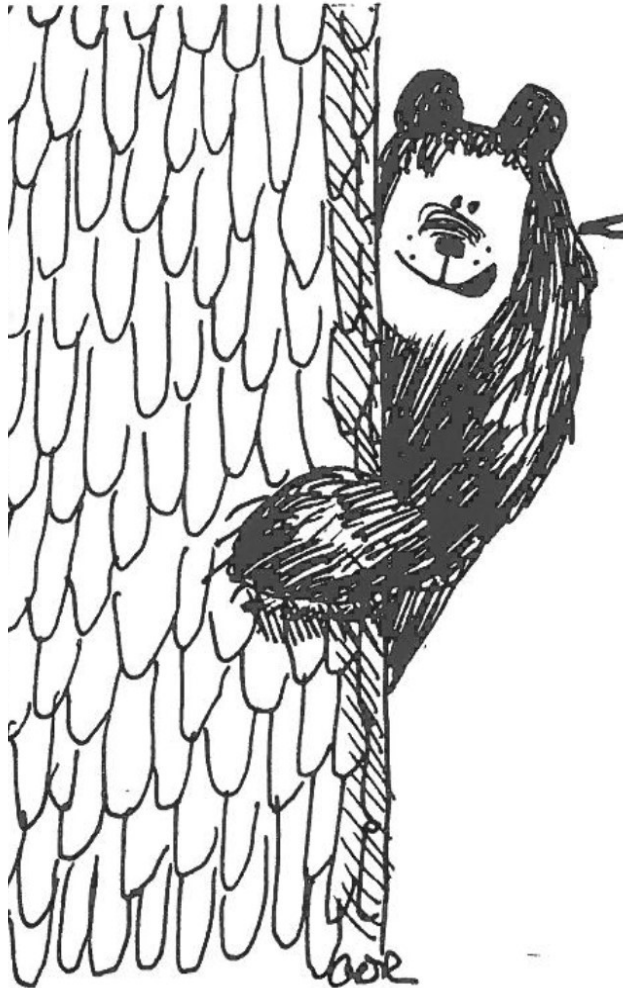
Dorset Property owners can expect to receive a letter in the mail, in late 2017/ early 2018 from the Assessors Office outlining the reappraisal plan and how collection of data will impact property owners. Dorset is fortunate to have a solid group of local professionals and residents to carry out this task. The local connection will help us achieve a high quality, fair, and accurate result. In addition performing the reappraisal "in house" will save Dorset taxpayers thousands of dollars.

Questions?

Contact Margot Schoffstall or Theda Farrell at 802-362-4571 x 6 or dorsetlister@gmail.com

About Town.....

Reminder to Dorset Taxpayers:



Property taxes are due:

Tuesday March 13TH

Mail payments to Town Manager's Office:

PO Box 715 East Dorset, VT 05253

Or in person at the Town Offices:

112 Mad Tom Rd. East Dorset, VT

PAY TAXES ONLINE AT (fees apply):

www.dorsetvt.org

Late Payment subject to 8% penalty & 1% interest on March 17TH

Also, if you live in VT full time you must file a homestead declaration online at: www.state.vt.us/tax , by April 15th

Call 362-4571 x 4 with questions.

JISP- Junior Instructional Skating/Sport Program

JISP (Junior Instructional Skating/Sport Program) is skating program designed for all skaters ages 5yrs-13yrs.

Registration for JISP is online only! The fee includes rental skates, 30 minute lesson and 75 min-tue free skate time on ice. This is not a drop off program. If you have questions please contact Martina Grattan 802-362-0150 ext 208

TUESDAY: January 2, 9, 16, 23, 30, February, 6, 13, 27

WEDNESDAY: January 3, 10, 17, 24, February 7, 14, 28

THURSDAY: January 4, 11, 18, 25, February 1, 8, 15 March 1

FRIDAY: January 5, 12, 19, 26, February 2, 9, 16, March 2



News from Bennington County.....

BCRC Receives Additional Funds to Develop Act 174 Town Energy Plans

This fall BCRC is receiving additional funds to support the development of Act 174-compliant municipal energy plans in the region. Act 174, passed in 2016 by the VT legislature, established regional and town planning standards that—if met—give plans substantial deference in Section 248 proceedings of the Public Utility Commission (formerly the Public Service Board) on the siting of energy generation facilities. Draft enhanced energy chapters have already been prepared with the Towns of Bennington, Dorset, and Sunderland, and these plans are set to begin local hearing processes in the coming months. This fall's additional funds will support enhanced energy planning in up to four more BCRC towns. The towns of Manchester and Stamford have already expressed interest in receiving assistance to develop enhanced energy elements. If your town is interested in Act 174 municipal energy planning, please contact Catherine Bryars at cbryars@bcrcvt.org or 802-442- 0713 x310 for more information.

Innovation, Job Creation, in East Dorset

By Cherise Madigan, Manchester Journal



ENGINEERED
PRINTING SOLUTIONS

EAST DORSET — When Julian Joffe established Pad Print Machinery of Vermont in 1995, he hoped that it would grow and expand in its Manchester home. Now, the company looks to expand its East Dorset facility for the second time in five years — and hire additional employees to fill that space.

Joffe, a native of South Africa, spent countless hours in his father's workshop as a child. Though he earned his degree in zoology, the entrepreneur eventually went on to lead his family's textile machinery business, emigrating to the United States in the mid-eighties. A decade later, Joffe made his way to Manchester. It was there that Pad Print Machinery of Vermont really began to take root. In 2003, the company outgrew its downtown location and embraced a new 22,500 square foot facility off of Route 7A in East Dorset. The facility added an additional 10,000 square feet of manufacturing space in 2015 in light of steady growth. A year later, Pad Print Machinery of Vermont was purchased by [Xaar](#); a corporation founded in Cambridge, England in 1990.

Pad Print Machinery, now more commonly known as Engineered Printing Solutions (EPS), currently fosters a team of over 70 employees ranging from engineers to customer service professionals. This spring EPS will add an additional 12,000 square feet to their manufacturing facility. In light of that expansion, to be completed in June, Joffe hopes to hire an additional "five or six" employees between now and April, 2018.

"Obviously we need more people to compliment that space," Joffe said, adding that positions for engineers, cost accountants, and purchasing professionals will be available. "The whole idea here is to actually bump up our revenues so we can push more machines out the door." Those machines are primarily pad printers, most often used to print on three-dimensional products. In addition to the five or six positions that their expansion will allow, Joffe says he also hopes to hire an additional three employees for EPS' machine shop, where designs from the company's engineering department come to life.

"At the moment we farm out probably a full 50 percent of our manufacturing component-wise, because we build little pieces that build machines," he said. "We're trying to bring that work in-house so we can produce more efficiently, and at a lower cost." Joffe says that as EPS continues to grow, he hopes that more employees will join their team. Those positions are likely to be across the board, he says. "If you think of a typical manufacturing corporation you have people that work at the high level, engineering and designing the product, but as you move out there are people in assembly, purchasing, customer service," Joffe said. "All of the different departments, as the company grows, will require more people." The company is "very discerning" in their hiring process, he adds, though they're open to fostering the growth of employees as well.

"Obviously we need a certain level of skill, but we always have interns that we're looking for," Joffe said. "We have a great intern now that we're hoping is going to stay full time." EPS is able to utilize the benefits of being owned by a global company, he explained, and provide both leadership and educational training for employees. As the machines they produce cost between \$500,000 and \$1.5 million, the salaries aren't too shabby either, says Joffe.

"What we're doing is bringing people in, seeing where else they can go, and help them climb the ladder within the organization," he said. "We try to build from within." For more information, visit <https://www.epsvt.com/>.



Winter 2017-2018 Newsletter from the Bennington County Solid Waste Alliance

The Bennington County Solid Waste Alliance (BCSWA) includes the Towns of Arlington, Bennington, Dorset, Glastenbury, Manchester, Pownal, Rupert, Sandgate, Searsburg, Shaftsbury, Stamford, Sunderland and Woodford and provides technical assistance to businesses, schools and institutions within the thirteen towns to encourage recycling and waste reduction.

2017 and 2018 Household Hazardous Waste Events: In 2017 BCSWA held household hazardous waste events in the spring in Bennington and in the fall in Dorset. Over 400 households participated along with three businesses. The Alliance will hold the next event on May 12, 2018 at the Bennington Transfer Station at 904 Houghton Lane in Bennington from 8:00 AM to 1:00 PM for residents of the 13 Alliance towns.



Business and School Outreach: The Alliance provided outreach to 40 businesses in 2017. This free service provides guidance on methods of recycling, disposing hazardous materials, and properly diverting food scraps and organics from landfills. This past year, the Alliance worked with Pownal Elementary, Stamford Elementary and Burr and Burton on improving their recycling efforts. This included helping Pownal Elementary begin composting all food scraps on site. If your school, business or institution is interested in having someone visit to discuss better ways to handle solid waste, organics, recyclables and other materials, please contact Michael Batcher at 802-442-0713 x 2 or mbatcher@bcrcvt.org.



Transfer Stations Accepting Food Scraps: The Alliance received a grant of \$4,000 from the High Meadows Fund to assist the Towns of Pownal, Searsburg, Shaftsbury and Stamford to accept food scraps from their residents. The Northshire Transfer Station in East Dorset and the Sunderland Transfer Station in Sunderland also accept food scraps and serve the towns of Arlington, Dorset, Manchester, Sandgate, and Sunderland. The Bennington Transfer Station accepts food scraps from residents of Bennington and Woodford. For more information on services provided by the transfer stations, visit <http://www.bcswavt.org/programs-and-projects/transfer-stations/>.

Reducing Food Waste: Visit <http://foodshift.net/blog/8-tips-reduce-waste-thanksgiving/> on ways to reduce food waste during the holidays. Better meal planning, creative cooking with leftovers, composting, and giving extra food to those in need can all help reduce waste and save money. The BCSWA website also has a new section on donating food to food pantries.

Sharps: If you use sharps including needles, and need to dispose of them, visit our Facebook page or web page on how to seal them in a sturdy container for disposal. Sharps can't be recycled and are dangerous if not disposed of properly.



Be Careful What You Put Down the Drain: Many materials, especially household hazardous waste, should NOT be poured down the drain, either to a septic tank or field or to wastewater treatment plants. These chemicals are toxic, will kill the organisms that break down waste, and will enter surface and groundwater supplies. Flushing prescription drugs down the toilet should also be avoided as these have been shown to harm fish and amphibians. Visit <http://www.bcswavt.org/programs-and-projects/sludge-septage-residual-waste/> for more information that will protect our water supplies.



BCSWA Newsletter continued:

Batteries, Fluorescent Bulbs, E-Waste, Textiles and Paint: Many retail stores are accepting alkaline and rechargeable batteries, fluorescent bulbs, including both tubes and CFLS and latex and oil based paint for FREE! Goodwill in Bennington accepts clothing and has trucks on weekends in Arlington and Manchester for donations of clothing. There are textile boxes located all over Bennington County, including at the transfer stations, where you can donate clothing. Goodwill also accepts donations of clothing and other items. Visit them at www.goodwill-berkshires.com. The Bennington, Northshire, Pownal, Searsburg and

Sunderland Transfer Stations accept E-Waste. Visit www.bcswavt.org to find locations for disposing these materials.



Phone Books? Unwanted phone books are a nuisance and a waste of resources. Virgin paper production for phone books in the U.S. uses an estimated 4.68 million trees worth of wood fiber annually. That is equivalent to clearing a forest the size of 14 football fields every single day. You can opt out of receiving a phone book by taking the following steps:

1. Visit phonebookoptout.us/go
2. Enter your zip code and create an account.
3. After completing registration, click "opt out of or order directories."

Choose "opt out of all" option, then "save changes" and hit CONFIRM

Bulky Waste Collection: The Towns of Arlington, Bennington, Dorset, Manchester, Sandgate, and Sunderland are planning a bulky waste collection in the spring. Residents will be able to dispose of bulky items including tires at the Bennington, Sunderland or Northshire Transfer Stations. Visit www.bcswavt.org this spring for more information.

Next BCSWA Board Meeting: The next BCSWA board meeting will be on Wednesday, March 14, 2017 at 4:00 PM with the location to be determined. An agenda will be at www.bcswavt.org at least two weeks prior to the meeting.

Need More Information? Visit www.bcswavt.org to find information on recycling, composting, disposing prescription drugs, and services offered by waste haulers. Many plastics as well as paper, cardboard, glass, electronic waste and other items are banned from landfills but are accepted by haulers and transfer stations. Talk to your hauler about recycling and how you can save money by disposing of materials properly. Check with your town hall to find out how you can access your town transfer station. Contact Michael S. Batcher at (802) 442-0713 x 2 or mbatcher@bcrcvt.org or visit the Alliance website at www.bcswavt.org for more information. You can also find us on Facebook.

The Dorset School:



Substitute Teachers Needed

Have you ever thought you would like to work at the school, but didn't know how?

We are always looking for substitute teachers! If you are interested in working with kids, helping out at school, and getting paid for it, please contact Kelly Leggett to set up an interview with Rosanna Moran, Principal.

Supporting the
Dorset School 8th Grade
Washington D.C. Trip



Dorset/Manchester

2017-2018

Community Coupon Book

Please consider purchasing an amazing local business coupon book for \$25! Proceeds benefit the 8th Grade Trip to Washington D.C. Just look at the amazing deals inside this coupon book contains....

- Buy one breakfast entree, get one free (excluding specials) at Up for Breakfast
- 15 % off a car detailing service at Farkas Auto Detail
- 30% off your purchase at Above All Vermont
- 20% off your meal at Christo's (excluding delivery & other promotions)
- 10% off your purchase at Spring & Harbor Boutique
- 20% off a service & loads of other deals at The Hair Retreat
- 10% off at Cafe Sora (excluding alcohol)
- 15% off Blackbird Cake Designs
- 20% off purchase at Joy all things underthings
- 15% off JK Adams Kitchen Store
- Free Admission to Open Skate at Riley Rink (excluding Holiday Skate)
- 15% off lighting at Green Peak Elements
- Free donut with purchase of coffee at Dorset Union Store
- 15% off workwear, clothing or apparel (sale items excluded) at H.N. Williams
- 20% off a purchase of \$40 or more at Northshire Bookstore
- Buy 3 pairs of socks, get ONE Free at The Mountain Goat
- One Free Class at The Manchester Gym
- One Free Class at Zen Revolution Studio
- Special Combo Meal Pricing at Village Picture Shows

All coupons expire 9/30/2018

The Dorset Village Library

Library Hours: Monday-Friday 11am-5pm, Saturday 10am-3pm.

Please visit the new library website www.dorsetvillagelibrary.org and “like” Dorset Village Library on Facebook for up-to-date news and access to our digital services. Contact the library if you would like to receive our monthly newsletter by email.



December artist of the month: Dorset School

The featured artist at the Dorset Public Library during the month of December will be The Dorset School Art Classes. The public is invited to meet the students and their teacher, Mr. Paarlberg-Kvam, at the opening reception on Saturday, December 2nd from 11-1pm. Refreshments will be served.



The Dorset Village Library will be showcasing a body of art works made by the 2nd, 3rd and 4th grade students at the Dorset School. This work highlights some of the art making skills that the students practice in their art class with Mr. Paarlberg-Kvam. The projects are designed to allow for individual expression and to be a demonstration of basic visual arts concepts and vocabulary discussed during the students' bi-weekly art session. Mr. Paarlberg-Kvam is in his 3rd year at The Dorset School and enjoys working with students of all ages. He finds great pleasure in challenging the students through creative problem-solving and enjoys affirming the unique talents and ideas of the kids in his classes. All K-8 Dorset student work will be on display at the annual art show held in the spring at the school.

The Lego Club meets on the third Thursday of every month. Ages 6+ welcome. The Lego Club is very popular, donations of Legos are always appreciated. New books, audio books and dvds arriving monthly. Please stop in and see us!

Contact us: dorsetvillagelibrary@gmail.com or 802-867-5774.

NOTICE TO VOTERS

Danby, Dorset, Landgrove, Londonderry, Manchester, Mt. Tabor, Peru, Sunderland and Weston

Annual Meeting for the new Taconic and Green Regional School District

and the Mountain Towns Regional Education District

Meeting Information

(The Mountain Towns RED meeting will be first)

Tuesday, February 27, 2018

7:00pm

Flood Brook School

91 VT Route 11
Londonderry, VT 05148

*Refreshments and Transportation Provided **

Taconic and Green Annual Report and the

Mountain Towns RED Annual Report

Available Thursday, February 15, 2017 at:

- Local Town Offices
- Manchester Library
- All Taconic and Green Schools
- BRSU Office – 6378 VT Route 7A, Sunderland
- Online at <https://qoo.gl/xFSLqg>
- Request at info@brsu.org or 362-2452

* Buses will depart from the following schools at 6pm:

Carrier School

Dorset School

Sunderland School

Manchester School



NEWS & UPCOMING EVENTS

To learn more about our winter events, call the Visitor Center at 802-394-7836. For outdoor events, please dress for the weather: sturdy shoes/boots, layered clothing, raingear, flashlight, snacks and water. All outdoor events are held weather permitting: if there's any question please call the Visitor Center to confirm that an event will be held.

Evening Hike. Saturday, 12/30/17, from 6 to 8pm. \$3/person. Join us on the 30th, just before the first full moon of 2018. Dress for the weather, and come equipped with a headlamp, water and snacks.

Guided Snowshoe Hike. Sunday, 1/14/18, at 10am. Free. Join Trustee Keld Alstrup and a group from the Green Mountain Club on a snowshoe trek to the Thoreau Cabin. This hike will be of moderate difficulty, perhaps 4.5 miles long. Dress for the weather, and bring water and snacks.

Tracking Workshop. January 27, 10am-12noon, \$5pp. Find out who's out and about in the winter landscape.

Owl Walk. February 24, 4-6pm, \$5pp. Whooo's looking for company in our late winter landscape? Well, the Barred owls are, the Great Horned owls, and whooo knows whooo else. If we're lucky we'll be able to listen in on the conversation of one or another feathered couple.

Evening Hike. March 3, from 6pm to 8pm. \$3/person. Join us on our evening walk, just after the appearance (on 3/01) of the Worm Moon. (Or the Crow Moon, or Crust Moon, or Sap Moon, if you prefer.) Whatever you call it, come dressed for the weather, and bring a headlamp, water and snacks.

Maple Celebration/Pancake Breakfast. March 24 & 25, 9am-2pm. Save the date! Our fabulous Maple Celebration features our own sausage and syrup, and is a terrific way to send Old Man Winter packing.

Dorset Players Winter Lineup!

Dorset Players to host Directors meeting

The Dorset Players will be hosting a director's meeting on **Tuesday, January 23 at 6:30 pm** at the Playhouse for directors who would like to direct a full-length play **for the 2018-19 Season**. The season includes four major productions (Fall/October, Christmas/December, Winter/March, and the Spring Musical/May). If you have a play in mind, be prepared to discuss casting and production requirements as well as potential royalties. [Click here for Form.](#)

We are also looking for directors for the 2018 One Act Festival to be held April 6-8. If you would like to direct, but don't have the time or experience for a full-length play, this is a great opportunity to get started. Looking for a play? The Players have a library of over 400 plays for your perusal. Call Kathy at the business office (802-867-5570) 10am-2pm Monday through Friday or email info@dorsetplayers.org for more information and for access to the play library.



By Terrance McNally

At turns funny and powerful, *MOTHERS AND SONS* portrays a woman who pays an unexpected visit to the New York apartment of her late son's partner, who is now married to another man and has a young son. Challenged to face how society has changed around her, generations collide as she revisits the past and begins to see the life her son might have led.

Director Sherry Kratzer has selected her cast and rehearsal will begin shortly. This production will be presented on Friday and Saturday, March 2 & 3, March 9 & 10 at 7:30 pm and Sunday, March 4 & 11 at 2 pm. Tickets are available on line at dorsetplayers.org

Your Support Is Needed... And Greatly Appreciated

We love our theatre and love producing shows and workshops and we also spend a lot of time and money just keeping the roof over our heads. You can help by attending shows, becoming a member or a sponsor or just donating to our building fund. Every little bit helps. Send donations to Dorset Players, Inc. P.O. Box 521, Dorset, VT 05251 or [donate online](#)



**Our Business Office is open
Monday through Friday between 10 am and 2 pm
Call Kathy at 867-5570 for more information
or go to dorsetplayers.org**

Town Clerk's Corner

The Town Clerk's Office is responsible for the recording of all land records, maintaining all vital records, supervising elections, issuing dog licenses, and renewal of motor vehicle registrations.

Recent Property Transfers (Sept. 2017 to present)

Seller	Buyer:	Address:	Price:	Assessed Value:
Melton	Callen	o Long View Ln (land)	\$45,000	\$122,900
Norman	Calamaro	98 Hidden Hollow Ln	\$606,634	\$660,200
Greenberg	Clarke	184 Windward South	\$390,000	\$375,000
Piontek	Connors	48 Morse Hill Rd	\$192,000	\$234,000
Dill	Forbes	o Owls Head Hill S (land)	\$95,000	\$162,300
Peterson	Frawley	249 Meadow Ln	\$1,580,000	\$1,700,300
Esposito	Greene	2598 Route 30	\$200,000	\$252,700
Martin	Harmon	217 Dorset West Road	\$845,000	\$1,049,100
Fynn	Hollander	87 Mount Aeolus Ln	\$475,000	\$546,200
Lawrence	Jones	o Route 30 (land)	\$150,000	\$137,900
Hallac	Levene	543 Lower Hollow Rd	\$1,210,000	\$1,162,900
Sheedy	Levine	80 Leary Lane	\$119,000	\$154,300
Mithoefer	Malisse	o Pinnacle Lane (land)	\$160,000	\$84,000
Dorr	Nichols	o Route 30 Lot 3 (land)	\$25,000	\$60,000
Dorr	Nichols	o Route 30 Lot 2 (land)	\$25,000	\$60,000
Marino	Sanderson	o Birchstone (land)	\$70,000	\$102,200
Gillespe	Schroeder	150 Oakman Lane	\$399,000	\$375,600

Questions? Call 362-4571 x 2 , Sandra Pinsonault, Town Clerk, MMC, CVC

DOG LICENSES ARE DUE APRIL 1, 2018



Manchester Route

Monday - Saturday

Adults: \$2.00 - Senior/Disabled persons: \$1.00
 Children 6 and Under Free (Must be accompanied by an adult)
 DEVIATIONS - Deviations from this route are available up to ¼ mile upon request. To request a deviation, call a day in advance to MVRTD at (802) 773-3244 x 117 or ask a bus driver to assist you. The actual arrival time at each stop may vary depending upon deviation requests along the route.



RMRTC	Green Mountain Plaza	Rutland Airport Business Park	Cumberland Farms Wallingford	White Rocks Inn	Mt. Tabor Country Store	East Dorset Country Store	Manchester Town Office	Chittenden Bank Manchester	Manchester Village Post Office
AM 6:30	6:37	6:50	6:57	7:00	7:10	7:20	7:27	-	-
8:30	8:37	8:50	8:57	9:00	9:10	9:20	9:27	9:29	9:33
PM 3:00	3:07	3:20	3:27	3:30	3:40	3:50	3:57	-	-
5:15	5:22	5:35	5:42	5:45	5:55	6:05	6:12	-	-

Manchester Village Post Office	Orvis Sporting Gifts	Shaw's Supermarket	Merchants Bank Manchester	Manchester Town Office	East Dorset Country Store	Brooklyn Road	Hartsboro Road	Wallingford House	Across from Cumberland Farms	Rutland Airport Business Park	RMRTC
AM -	-	-	-	7:27	7:34	7:44	7:54	7:56	7:57	8:06	8:26
9:33	9:34	9:35	9:37	9:40	9:47	9:57	10:07	10:09	10:10	10:19	10:40
PM -	-	-	-	3:57	4:04	4:14	4:24	4:26	4:27	4:36	4:56
-	-	-	-	6:12	6:19	6:29	6:39	6:41	6:42	6:51	7:11

15 THE SCHEDULED TIMES MAY BE SUBJECT TO CHANGE DUE TO INCLEMENT WEATHER AND/OR TRAFFIC CONDITIONS. PLEASE CHECK OUR WEBSITE WWW.THEBUS.COM FOR UPDATES.

Town of Dorset

112 Mad Tom Road
PO Box 715
East Dorset, VT 05253

Phone: 802-362-4571

Fax: 802-362-5156

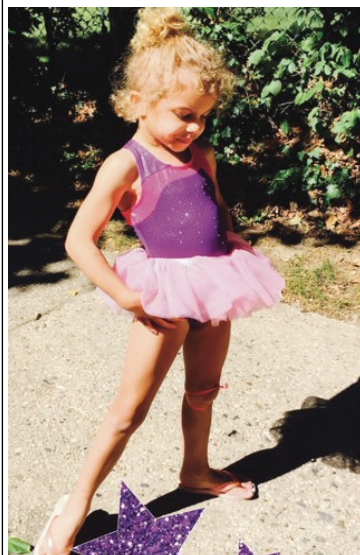
Email: townmanager@gmail.com

Website: www.dorsetvt.org

Vermont Railway Train in East Dorset



Things to do!



Winter Session

Balletmix Dance Class

A unique dance class that mixes ballet technique with jazz, lyrical and musical theater.

8-Week Winter Session
1/6 to 3/17

K-2nd Grade • Thursday 3:45-4:30
K-2nd Grade • Saturdays 10:00-10:45
3rd-5th Grade • Saturdays 11:00-11:45

New Location

The Dorset Playhouse
104 Cheney Rd. • Dorset, VT

jessicadillon.balletmix@gmail.com

MARCH 17th: Winter Showcase
at The Dorset Playhouse



Third Thursday Lunchtime Lectures

February 15 — TBD — TBD

March 15 — Jeremy Davis — **Lost Ski Areas of Vermont**

April 19 — TBD — TBD

May 17 — Nora Rubenstein — **The Art of Spinning**

June 16 — Art Gilbert & Jon Mathewson — **Gettysburg Quarry and Owl's Head**

June 21 — Michelle Pagan — **The Art of Textiles**

June 23 — Art Gilbert & Jon Mathewson — **Freedley Quarry**

July 14 — Art Gilbert & Jon Mathewson — **Folsom Quarry**

August 11 — Marilyn Kinney — **Mad Tom Trail Hike**

August 25 — Ruth Stewart — **East Dorset Village Hike**



Dorset Farmer's Market Sundays:
10am to 2pm at JK ADAMS in Dorset.