

Spur Hikes in Owls Head Town Forest:

Lower Prince Quarry Hike:

Begin at the Trailhead, take the **orange** on the left. At first foundation turn left and follow the trail 0.25 miles to the **Lower Prince Quarry**.

Klondike Quarry Hike:

Begin at the Trailhead, take the **yellow trail** on the right, follow **0.65 miles** to the base of a ledge face and the **Klondike Quarry**. Continue on **0.35 miles** to **Gettysburg Quarry**

Owls Head Town Forest was made possible by generous community members and grants from:



Hiking Owls Head Town Forest

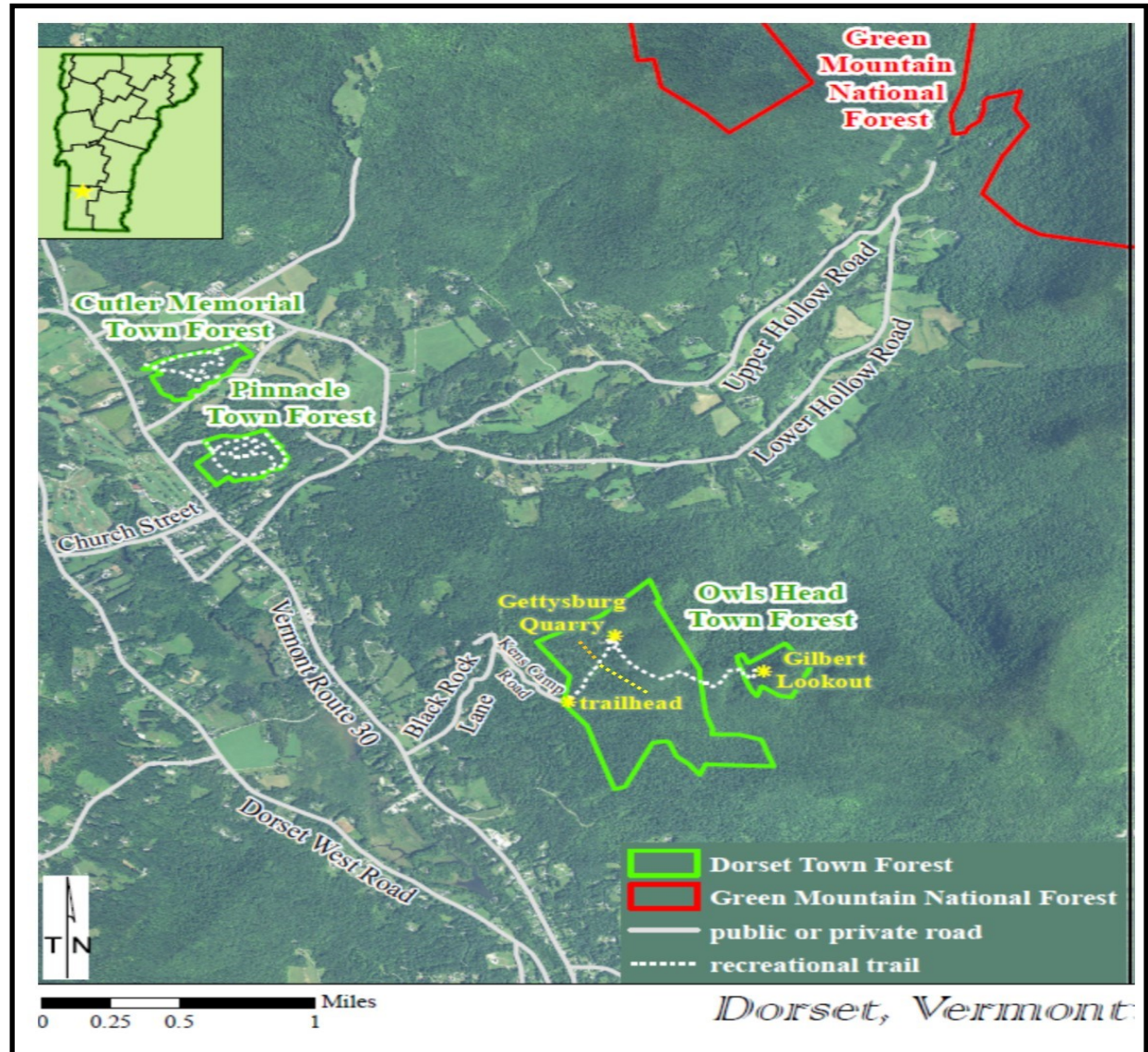
Dorset, Vermont

www.dorsetvt.org/hike

Did you know Dorset is home to over 20 miles of hiking trails.

The Town developed a trail network that illustrates the historic, cultural, ecological and recreational values of the Town Forest. The main trail follows an old road up to Gettysburg Quarry and beyond to Owls Head and Gilbert Lookout. The **Town Forest Trail Head** is located off Black Rock Lane/ Ken's Camp Rd (both private roads) off Vermont Route 30. Please respect the neighbors on these roads.

New in 2020! Trail Head off Raptor Lane & Multi—Use Path



Gettysburg Quarry Hike:

Distance: 0.45 miles

Elevation Change: 800'

Hiking Time: 40 mins/ 25 mins return

From the Trailhead take the **blue trail on the left**. A hike of **0.45 miles** ascending steadily will bring you to the Quarry. Just before the Quarry is a side trail leading to the quarry lookout. Be sure to take a seat on **Art's Bench** and enjoy the view of Dorset Valley.

Gilbert Lookout Hike:

Distance: 1.60 miles

Elevation Change: 1,260'

Hiking Time: 1.75 hrs./ 1.25 hrs. return

From the Trailhead take the **blue trail on the left**. Follow the blue trail beyond the **Gettysburg Quarry** a total of **1.5 miles**. Continue on the **blue trail** as it reaches a flat hilltop with a view of Owls Head; the trail continues through the saddle to a **large yellow birch tree**. At this point the trail turns right, with a steep zig zag climb up the cliff another **0.10 miles**. Arrive at **Gilbert Lookout**, an outcropping of rock with views as far as the Adirondacks. Be sure to see the "**Gilbert Lookout**" **plaque** that has called the lookout home since 1945.



Gettysburg Quarry



Stone Stairs on Trail



Azaleas at the Lookout

