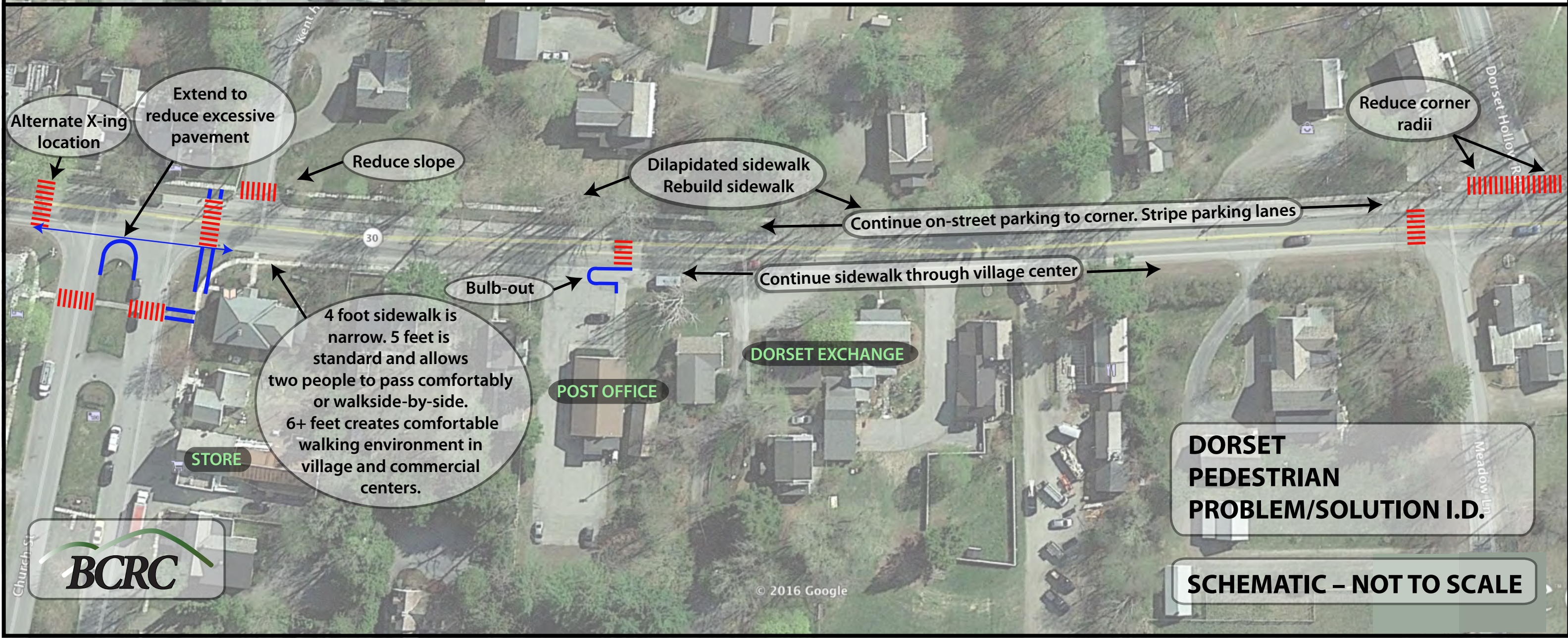


## DORSET PEDESTRIAN PROBLEM/SOLUTION I.D.

- Expand and formalize on-street parking to visually narrow road, calm through traffic, and provide more parking.
- Use standard sidewalk widths (5'+) to make walking more comfortable.
- Provide sidewalks on both sides of VT30 throughout village center.
- Reconstruct dilapidated sidewalks.
- Install crosswalks at logical crossing locations.
- Reduce unnecessary paved areas to improve aesthetics, shorten crossing distances and calm traffic. In particular: expand Church Street grass median to align with VT30 curb, add bulb-out at post office entrance, reduce corner radii at Dorset Hollow Road.
- Reduce sidewalk slopes where possible to meet ADA requirements (slopes 5% or less).
- Preserve/expand/formalize green strip buffers between sidewalks and road.



**DORSET PEDESTRIAN PROBLEM/SOLUTION I.D.**

**SCHEMATIC – NOT TO SCALE**





Dilapidated sidewalk discourages walking

Repave. Extend parking lane for overflow parking. Consider adding curb to improve drainage and reestablish green strip.



Worn path shows need for sidewalk



Parked vehicle blocks logical pedestrian crossing



7' parking lane is narrow. Consider moving line 1' to make standard 8' parking lane and visually narrow the travel lane to calm traffic.