

Cutler

Memorial Forest:

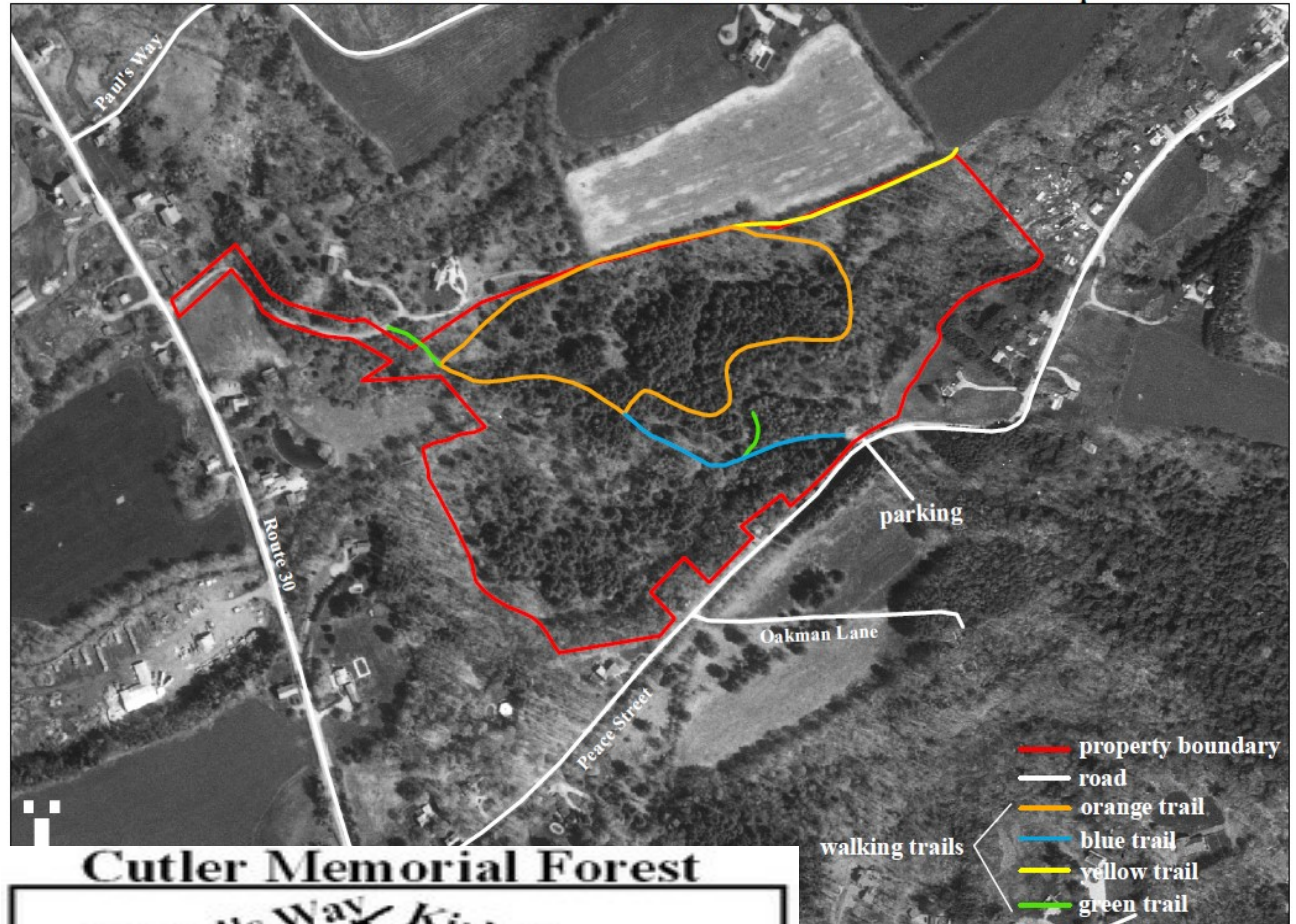
Cutler Memorial Forest, located off Peace Street near the Dorset Village, is a great outdoor location for the public to explore. The property was given to the town in 1976 by Mrs. Isabella Cutler. In the early years walking trails were forged and a bridge was built over the Mettawee River.

In recent years the Dorset Conservation Commission has made great improvements to the property: marking trails, creating a parking area, and building a new bridge over the river.

A hike around the entire property takes from 35-45 minutes and the trails cover both flat ground and hills. Parking for Cutler Forest is provided off Peace Street area, and the entire property is easily accessed from this entrance point.

Directions: Follow Route 30 north past Dorset Village about .5 miles, turn right on Peace Street, follow Peace Street .25 miles parking is just before the bridge on your left.

Town of Dorset - Cutler Memorial Forest - trail map



prepared by
Calfee Woodland Management
2 February 2010
www.calfeewoodland.com

